



## Batch #100161 Summary

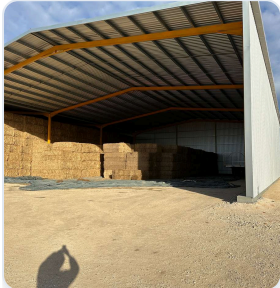
Commodity:	<b>Hay</b>	Species:	<b>Protein</b>
Grade:	<b>Utility</b>	Sub-Species:	<b>Vetch</b>
Inspector:	<b>Randal Coggan</b>	Location:	<b>Netherby, VIC</b>
Inspection Date:	<b>14/05/2026</b>	Storage:	<b>Shedded</b>
Bale Weight:	<b>700</b>	Bale Size:	<b>8X4X3 Large Squares</b>

### Feed Test Results

Moisture:	<b>7.17</b>	Dry Matter:	<b>92.83</b>
ME (Mj/kg DM):	<b>6.89</b>	CP:	<b>13.97</b>
Sugar (WSC):	<b>11.7</b>	ADF:	<b>43.56</b>
aNDF:	<b>57.09</b>	RFV:	<b>90</b>
RFQ:	<b>53.41</b>		

### Inspector Notes

Average line of vetch stacked in shed. Little aroma and leaf



### Visual Inspection

Year of Harvest:	<b>2025</b>	Month of Harvest:	<b>Oct</b>
Visual Colour %:	<b>50%</b>	Leaf Retention:	<b>Signs of Leaf Loss</b>
Leaf Texture:	<b>Mild</b>	Smell:	<b>Lacks aroma</b>
Stem Width:	<b>5mm or less</b>	Cutting Stage:	<b>Before or at flowering</b>
Weeds:		Weed Species:	
Contaminants:	<b>Observed</b>	Contaminate Details:	<b>Old wheat stubble Odd canola stubble</b>
Flag Leaf:		Staining:	<b>Significant Yellow</b>
Chopped:	<b>No</b>	Conditioned:	<b>Yes</b>
Organic:	<b>No</b>	Moulding:	<b>Some Mould</b>
Spotting:	<b>No Spotting</b>	Avg. Moisture:	<b>10.60</b>
Top Moisture:	<b>14.10</b>	Bottom Moisture:	<b>9.10</b>
Number of Probes:	<b>37</b>	Moisture Notes:	